



Your GCSE Options



Welcome

February 2015

Dear Parent/Guardian

I hope you find this options booklet useful. It is always an exciting process but the decisions that have to be made are not always straightforward. This year there are a couple of extra factors to consider that may affect your child's education for the next two years and well beyond.

The first is one that we have included in order to offer greater choice for youngsters who may not find a programme comprising only GCSEs completely to their taste. There are a number of BTEC courses on offer as well as one or two other qualifications to supplement GCSE. These courses usually take twice the time and are more focussed upon coursework and more vocational forms of learning. This means a BTEC reduces the number of exams being sat at the end of the course significantly and can be more accessible. The government is likely to reform them, but they are still going to be suitable for a lot of our young people. We offer them because they are worthwhile qualifications in themselves and will remain so whether or not they retain their current tariff in the school league tables.



The second thing to reflect upon is the English Baccalaureate (EBacc). This is a qualification comprising 6 GCSEs at grade C and above in English, Mathematics, two sciences, History or Geography and French or German. At the moment it is a performance indicator for schools but it may turn into a qualification in its own right a may well become a significant yardstick in the world of work and academia. It is highly likely that university departments, certainly in the higher status universities, will regard it as a feature in selection of candidates.

Many schools are making Humanities and Languages compulsory for all in response to the government's initiative. Many more are insisting that those capable of passing them should be made to take a Humanities and Languages option. Our governors looked at changing the options to make some subjects compulsory for some students, which would certainly help us in the league tables. However, we feel it better to allow families to make the choice, while being fully informed of its significance.

If your child chooses not to study for the EBacc there is a danger that in four years' time they will not be able to gain access to the university course or a profession that they want. It is also possible that some sixth forms will look for it for at least some courses. We do not know precisely how key this qualification will be but there is a real chance it will become very important in some areas, particularly for students who are more able academically.

We are happy to leave the decision to you and your child. We appreciate that you may be happy to take the risk of not opting for the EBacc in order to allow them to study a combination of subjects they enjoy and feel will offer them more.

Your child will have a discussion with a member of the Senior Leadership Team in school and there will be a chance for you to talk it through further at the options evening. If your child's options do not include the EBacc, and we feel they could pass it, we will write to you again. We will not look for a return, nor follow it up. We are merely seeking to ensure you feel we have paid sufficient respect to your freedom to choose and allowed you to do so in full knowledge of the issues surrounding the EBacc.

I hope you find the options process a pleasant one and that it leads to a programme of study over the next two years that is enjoyable and successful.

Best wishes

NJ Willis
Headteacher



Contents

Introduction	6
Your Choices	7
Certification	8
Some Questions to think about	9
English Language & English Literature GCSE	10
Mathematics GCSE	11
Science GCSE	12
Physical Educations CORE	13
Religious Education CORE	14
Art & Design BTEC double option	15
Art & Design GCSE	16
Business BTEC single option	17
Business BTEC double option	18
Dance GCSE	19
Design & Technology: Food Technology GCSE	20
Design & Technology: Graphics GCSE	21
Design & Technology: Resistant Materials GCSE	22
Design & Technology: Textile Technology GCSE	23
Drama GCSE	24
French GCSE	25
Geography GCSE	26
German GCSE	27
Health & Social Care BTEC single option	28
History GCSE	29
ICT GCSE	30
Music GCSE	31
Physical Education GCSE	32
Religious Studies GCSE	33
Skills for life ASDAN double option	34
Sport BTEC double option	35
Important Dates	36



Introduction

For the past three years you have studied the same subjects as everyone else, with little or no choice. In Year Ten there is some choice in the subjects you can study.

This booklet is to help make sure you follow the right courses for your abilities, needs and interests. Selecting the right courses is important. It could affect your future.

Who Chooses?

Every student will have an interview with a member of the school's Senior Leadership Team in early March to help select the right courses.

You, your parents, and your teachers all play an important part in deciding on the best courses for you. You and your parents should indicate your preference on the course selection form which will be given to you during March.

Once you have chosen your subjects, if your teachers feel that the courses you have selected are not the best ones for you, we will discuss them with you again and if necessary with your parents. We will not make any changes without discussing them with you. In the end, it is your choice.

We shall do our very best to allocate students to their preferred courses fairly.

Please note, however, that:

- Some courses may become oversubscribed so that we cannot guarantee your choices
- In the event of an option course having a very small take-up, it will not be run



Your Choices

All students study English, Maths, Science, core PE and PSHE.
These subjects take up 18 out of your 30 lessons each week.

Option subjects take up the remaining 12 lessons each week. Most subjects are single options taking 3 lessons per week, but there are a few double options that take 6 lessons a week. Whatever you choose, the total number of lessons must add up to 12. This means you can choose:

- 4 single options = 4×3 lessons = 12 lessons in total
- 2 single options + 1 double option = $3 + 3 + 6 = 12$ lessons in total
- 2 double options = $6 + 6 = 12$ lessons in total

These are the subjects we offer:

- BTEC Art and Design (double option)
- GCSE Art and Design
- BTEC Business (single option)
- BTEC Business (double option)
- GCSE Dance
- GCSE Design & Technology: Food Technology
- GCSE Design & Technology: Graphics
- GCSE Design & Technology: Resistant Materials Technology
- GCSE Design & Technology: Textiles Technology
- GCSE Drama
- GCSE French
- GCSE Geography
- GCSE German
- BTEC Health and Social Care
- GCSE History
- GCSE ICT
- GCSE Music
- GCSE Physical Education
- GCSE Religious Studies
- ASDAN Skills for Life (double option)
- BTEC Sport (double option)



Certification

The majority of courses in this booklet lead to GCSE (General Certificate of Secondary Education) qualifications. Please see the individual course pages for details.

In the majority of cases grades run from G to A, with an A* grade for exceptional candidates. Your child will be sitting the new specifications in GCSE English and Mathematics. For these course grades will be awarded on a scale of 1 – 9, where 9 is the highest award.

In many subjects students will be entered for the examination in one of two 'tiers' appropriate to their level of attainment.

The Foundation tier leads to Grades G to C (1 – 5), and the Higher tier from Grades D to A* (4 – 9). Where tiering is different from this, it is described in the individual subject section.

In some subjects it may be more appropriate for some students to aim for the Entry Level Certificate. This is provided by the same examination boards as the GCSE, and offers assessment at a more basic level.

Controlled Assessment

In most courses the final written examination will be only one part of the overall assessment and controlled assessment will form an important part of the final grade.

- In all these courses you must be prepared to complete controlled assessments on time and to the best standard you can manage.
- Controlled assessment is work undertaken in the classroom but under exam conditions.
- In some courses this will begin in Year 10.



Some Questions to think about

What do I want to do when I leave school?

You may already know exactly what career you wish to follow. If so, you should choose the subjects which may be needed as qualifications. If you are a more academically able student, you should also bear in mind the 'Ebacc' qualification that Mr Willis refers to in the introductory letter to this booklet. Your Form Tutor will have information that can help decide whether this path might be most suitable for you.

Remember, though, that you may change your mind about your career in the next two years and it is not usually possible to change your chosen subjects part of the way through a two-year course. For this reason it is best to have a balanced range of courses to keep career options open.

We hope most of you will stay in education at Wallingford School until you are 18. You may wish to consider which subjects you might go on to study or what training course you might apply for when making your Year 10 choices.

Most Year 9 students have no settled ideas of what they would like to do after leaving school. Again, you need a balanced set of courses from the range available. This will leave you with plenty of possible careers to choose from later on.

What subjects do I enjoy?

Only you know the answer to this. If you like a subject, you will not mind working hard at it. Hard work is essential whatever you choose.

What subjects am I good at?

As well as thinking carefully about this yourself, you should use the advice of your teachers and form tutor.

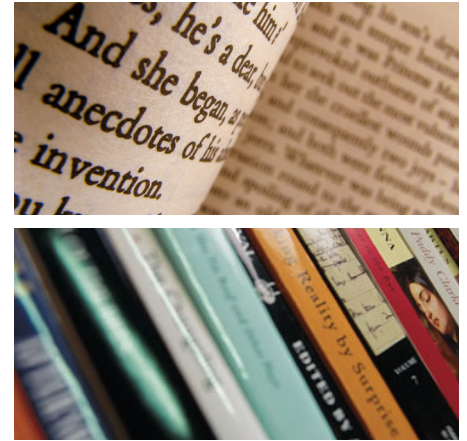
How do I enjoy working?

Some subjects will require you to do a lot of coursework; others will be assessed mainly by exam. Think about which way of working you prefer. If you are not confident in exams you should consider coursework based courses, particularly the BTEC courses.



Why study English?

The study of English Language and English Literature allows you to explore the language in which you think and speak. It encourages you to investigate ideas and language in many areas – from teenage slang to Shakespeare’s plays, via websites and novels of different cultures. By the end of the course we hope you will feel confidence and enjoyment in using the most flexible and influential language in the world!



What will I study?

We have yet to make a final decision about which examination board’s specification we will follow. However, we do know that the course will lead to two separate GCSEs: one in English Language and one in English Literature.

English Language will involve exploring and producing non-fiction; understanding and analysing prose fiction; and writing creatively. Texts from a variety of genres and eras will be studied.

English Literature will involve reading and responding to Shakespeare and contemporary drama; studying ‘classic’ novels and more recent novels from other cultures; understanding and analysing a wide range of poems.

How will I study?

English will be studied through a variety of whole class, group and individual tasks: discussions and debates; play readings and poetry performances; non-fiction and creative writing tasks.

How will my work be assessed?

Achievement in English Language and Literature will be graded from 1-9, with 9 being the highest level.

English Language

100% final exam, without tiers; there will be no coursework or controlled assessment.

50% Reading

50% Writing

Spoken Language (formerly Speaking and Listening) will still be assessed but reported separately and given a 0% weighting

English Literature

100% final exam, without tiers; there will be no coursework or controlled assessment.

Please see Ms Lancaster for more information

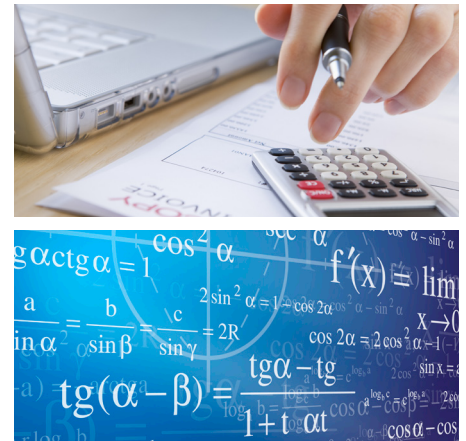
Why study Maths?

Nationally, the Mathematics GCSE is split into two tiers, Foundation and Higher.

We use this flexibility to provide courses that allows students to fulfil their mathematical potential and so achieve their best possible grade.

The allocations to these courses are based on performance in Year 7, 8 and 9, but they are not rigid and transfers between sets can take place in Year 10 and 11, particularly after assessments.

These courses build on the work done in Key Stage 3 and offer students the opportunity to acquire new mathematical knowledge, to enhance numeracy skills and to develop further their problem- solving techniques.



What will I study?

The six areas of Mathematics that are studied are:

- Number
- Algebra
- Ratio, proportion and rates of change
- Geometry and measures
- Probability
- Statistics

In addition to these areas, students will be assessed on 'Functional elements' of mathematics, where more focus will be put on problem solving and the ability to think about the context of a question. Students will also be required to memorise formulae.

How will my work be assessed?

Students will be assessed at the end of Year 11. They will sit three papers of equal weighting each 1 hour and 30minutes long. One will be a calculator paper and the other two will be non-calculator.

There is no coursework or controlled assessment in Mathematics.

The table below shows the two tiers and the grades available in each

Tier	Grades available
Higher	4 - 9
Foundation	1 -5

Please see Mrs Ramsay for further information

Why study Science?

The study of science enables you to make informed choices and decisions about a wide range of issues that will have an impact on your life from IVF treatments, to cloning, to whether we should release nano-scale robots into human bodies to fight illness.

Science is a compulsory subject. Some students will study triple Science, resulting in a GCSE in Biology, Chemistry and Physics, but most of the year group will follow the double Science course leading to a Core and Additional Science GCSE. The decision about which course you take will be made by your Science teachers to ensure that you stand the best chance of succeeding and achieving highly in Science.



What will I study?

You will study a wide range of content across the whole spectrum of the sciences.

The aims of the course are:

- To learn how science affects our everyday life and how to evaluate scientific information and evidence presented by, for example, the media.
- To learn how ideas can be explained using science, and how theories are developed.
- To develop your ability to explain things in a scientific way and communicate your ideas to other.
- To develop the skills you need to carry out practical work safely and accurately.
- To prepare you for further studies and careers which need a Science background.

How will I study?

Your lessons will be a variety of practical tasks, discussion based lessons and written work. We aim to ensure that there are a range of activities in every lesson and our primary objective is to enable you to learn and reach your full potential.

How will my work be assessed?

Each topic will have a formal test which will give you feedback on both content and analysis strengths and developments. You will carry out controlled assessment during the course and at the end of the course you will take written examinations.

Please see Dr Fosdike for further information

Year 10 Core PE Pathways Programme

In Year 10 students can select which activities from Years 7 - 9 they wish to further develop.

Pupils are choose option blocks that will each last two terms. Within that block they will take part and learn skills in three activities. Sports such as the following are on offer:

- Rowing
- Body combat
- Body balance
- Lacrosse
- Weights
- Street dance
- Handball
- All of the traditional sports studied in year 7-9

In games a greater emphasis than in previous years is placed on tactics and more complex skills, giving students a more in-depth knowledge of each sport. Whilst in individual activities students can participate in a new activity, encouraging greater participation, personal confidence and self-esteem. Students, who wish to, can continue to experience competition.

Students can opt to undertake the nationally recognised Sports Leaders Level 1 Award, This culminates in our students coaching pupils from the local primary schools and encourages confidence, leadership skills and commitment. We also offer specific leadership awards in individual sports to students in Year 11.

Fixtures and practices continue to run for Year 10 students, enabling and encouraging participation in sporting activities when they leave school. It is strongly recommended that GCSE PE students attend extra-curricular practices.

Please see Mr Smith for further information



Why study Religious Education (Core)?

The GCSE Short/Full Course in Philosophy and Applied Ethics is offered by the RE Department with the option to take the GCSE exam in the summer of Year 11.

How will I study?

The timetabling of lessons is finalised in the new academic year, but these usually occur outside of curriculum time.

How will my work be assessed?

There is no coursework with students assessed at the end of Year 11.

Please see Mrs Massie for further information



Why study Art & Design?

A BTEC First Certificate is a practical, work-related course. You learn by completing projects and assignments that are based on realistic vocational situations, activities and demands. It is designed to prepare you for potential employment or further vocational studies in the world of Art & Design.

A BTEC First Certificate is equivalent to two GCSEs grades A*-C.

What will I study?

You will gain a practical, vocational understanding of the visual arts by developing practical skill development with real life briefs. You will gain an insight into working practices of artists and designers and learn about working as an artist/designer and how to form efficient business practices.



How will I study?

The qualification is taught over 240 guided learning hours (GLH). Students must complete two core units, two mandatory units, and the equivalent of two optional specialist units. Units are incorporated into thematic topics set in a vocational context. Two units at the end of each year are externally set projects. You may take the following Units for example:

Year 10:

- Introduction to Specialist Pathways in Art & Design
- Communicating ideas in 2D
- Communicating ideas in 3D
- Creative Project in Art & Design which is externally set.

Year 11

- Investigating Contextual References
- Photography Briefs
- Recording for Creative Intentions which is externally set.

Students will study through both pupil and teacher-led activities, the use of ICT and independent learning. This course is 25% externally assessed and 75% internally assessed and will require students to carry out primary and secondary research.

How will I be assessed?

The coursework will be internally assessed by teachers and the Exam will be externally assessed by examiners. Students will then receive a Pass, Merit, Distinction or Distinction* in each unit which will all add together for their final GCSE result.

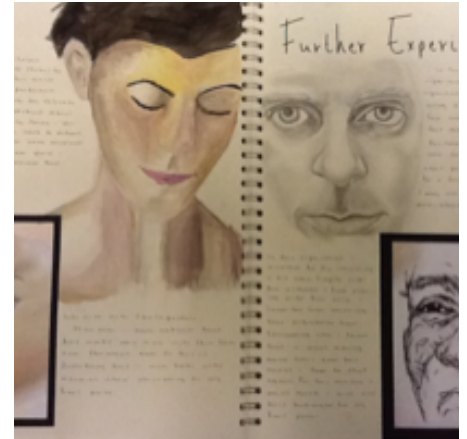
Please see Mr Pickford for further information

Why study GCSE Art & Design?

GCSE Art & Design is a course which gives you a wide range of creative, exciting and stimulating opportunities to explore your interests in art and design in ways that are personally relevant and truly developmental in nature. You will develop creative, imaginative and practical skills and learn to appreciate works of art produced by artists, crafts people and designers from different times and different cultures.

What will I study?

Art is not just about drawing and painting but encompasses working and experimenting with a range of different media in 2D and 3D including printmaking, mixed-media, sculpture, ceramics, digital photography and image manipulation.



How will I study?

- Unit 1: Portfolio of Work (60% of your final grade.)

During the course you will be expected to complete at least two theme-based projects for Unit 1. You will explore experiment and develop ideas in your sketchbook towards a series of final outcomes in varied media.

- Unit 2: Externally Set Task (40% of your final grade)

AQA will set a question paper containing a selection of starting points in January of Year 11. You will be required to produce a personal response from one starting point. You will then have unlimited preparation time before a ten hour period of sustained focused study in which to develop your own unaided work.

How will my work be assessed?

Throughout the course you will be assessed on the following criteria:

- developing ideas through investigations informed by contextual and other sources demonstrating analytical and cultural understanding.
- refining ideas through experimenting and selecting appropriate resources, media, materials, techniques and processes.
- recording ideas, observations and insights relevant to their intentions in visual and/or other forms.
- presenting a personal, informed and meaningful response demonstrating critical and analytical understanding, realising intentions and where appropriate, making connections between visual, written, oral or other elements.

Please see Mr Pickford for further information

Why Study Business?

Business Studies plays an interesting and crucial role in getting students ready for the world of work. The BTEC course allows students to work towards their strengths. Students who are interested in researching companies, presenting ideas and producing reports are perfect for this course.

The BTEC Certificate in Business is worth the equivalent of two GCSE grades A – C.”

What will I study?

Learner must complete two core units:

- Enterprise in the Business World (internal assessment)
- Finance for Business(external assessment)

Mandatory Unit

- Principles of Marketing(external assessment)

A choice of five optional specialist units from a choice of twelve.

How will I study?

Students will study through teacher-led activities, the use of ICT and independent learning. Students will also be encouraged to keep up to date with businesses in the news.

How will my work be assessed?

This course is assessed both internally (your teacher will mark your coursework) and externally via Onscreen tests and a paper based exam. Students will achieve a Pass, Merit or Distinction level in each unit. This will then be counted toward their final mark at the end of Year 11.

Result	Equivalent GCSE Grade
D*	2 x A*
D	2 x A
M	2 x B
P	2 x C

Please see Ms McGowan for further information



Why Study Business?

Business Studies plays an interesting and crucial role in getting students ready for the world of work. The BTEC course allows students to work towards their strengths. Students who are interested in researching companies, presenting ideas and producing reports are perfect for this course.

What will I study?

Students will study a combination of core, mandatory and optional units.

Core Units:

- Unit 1 – Enterprise in the Business World (internal assessment)
- Unit 2 – Finance for Business (external assessment).

Mandatory Unit:

- Principles of marketing (external assessment).

Optional Units:

- We will choose the optional units with input from the students.

How will I study?

Students will study through teacher-led activities, the use of ICT and independent learning. Students will also be encouraged to keep up to date with businesses in the news. It is vital that students have good organisational skills as they are required to meet rigid deadlines.

How will my work be assessed?

This course is assessed both internally (your teacher will mark your coursework) and externally via onscreen tests and a paper based exam. Students will achieve a Pass, Merit or Distinction level in each unit. This will then be counted toward their final mark at the end of Year 11.

Please see Ms McGowan for further information



Why study Dance?

It is a fantastic course for students who enjoy all aspects of Dance and wish to extend their practical skills to include technique, performance and choreography skills. You will become more confident in expressing yourself and communicating ideas as well as working in groups and individually. The course also builds on your appreciation of Dance pieces performed by others, including professionals.

What will I study?

You will develop your own performance skills performing as part of a group and individually. You will also develop your own choreography skills through applying different devices and principles. Through observation and analysis you will learn to evaluate your own dance choreography and performances, as well as pieces from professional companies to include consideration of the lighting, set design costumes and accompaniments that they use.

How will I study?

Lessons are mainly practical based and you will work individually on tasks, as well as part of groups, in order to develop technique, choreography skills and performance skills. A proportion of the lessons will be focussed on preparation for the Unit One written exam.

How will my work be assessed?

- Unit 1: Critical appreciation of Dance 20%.
A one hour written exam
- Unit 2: Set Dance 20%
This will be recorded onto DVD and sent to the exam board for marking
- Unit 3: Group Performance piece
- Unit 4: Solo composition task 15% and Choreography 2
Both Unit 3 and Unit 4 will be performed live in front of the examiner.

Please see Miss Jolly for further information



Design & Technology: Food Technology GCSE

Why Study Food Technology?

Food technology offers you the opportunity to explore the world of food and learn a practical life skill to help you in the future when you will have to cook for yourself!

Having a Food Technology qualification can lead to so many jobs since the food industry is expanding all the time and is one of the largest employers in the UK. You could have a career in food marketing, product development, catering/hospitality industry and even teaching.



What will I study?

- Diets, health and nutrition
- Develop your practical skills to make new and different food products
- Functional properties of foods
- Environmental considerations in food choice
- Experimenting, investigating and testing products
- Food, ingredients and processing techniques
- Technological developments
- How to be creative and design new food products
- Manufacturing of food products

How will I study?

You will study the AQA specification course through a mixture of practical and written work; this will give you the knowledge and understanding for the written exam. You will make a variety of products under topics such as Cakes, Pastry, Desserts, Sauces, Nutrients (protein, carbohydrate dishes) and looking at Finishing Techniques. Double lessons will always be spent doing practical or investigative work and the single lesson will emphasise the theory.

In Terms 5 and 6 of Year 10 you will commence the coursework element of the course and will continue this into Year 11.

How will my work be assessed?

Your GCSE grade will be awarded as a result of completing two units of work:

Unit 1: A written examination worth 40% of the total marks which will require you to apply what you have learned during the course in an examination situation.

Unit 2: A coursework project called "Design and Making practice" which involves answering a design task and designing and making a food product: this is worth 60% of the final mark.

Please see Mrs Ward for further information

Why study Graphics Products?

Graphic Products is a creative and interesting subject to study, which can lead you to wide range of worthwhile careers. You will find there is much to learn and most of this will be through you getting involved with practical activities. Most of the theory elements are easier to understand if you approach them in a practical way and you will be able to improve many of the skills necessary as you carry out the project work.



What will I study?

- Creating and designing new products.
- Understanding how the design process works.
- Learning how to research a topic effectively.
- Understanding how to use this research to guide your designs.
- Learning how industry uses graphics and modelling in a wide range of contexts.
- Developing skills that enable you to present quality designs and products.
- Learning about graphic processes, techniques and making.
- Experimenting, investigating and testing products.
- Understanding how a range of products are manufactured commercially.
- Having an insight into the use of colour, shape and layout of designs.
- Understanding and using a variety of CAD/CAM techniques.



How will I study?

Studying Graphic Products involves you working somewhere between how a graphic designer and a model maker would work in industry. Your classroom becomes not only a design studio, but also a place to make high quality models in three dimensions. You will be designing and making a range of products; learning different ways of presenting your ideas to a client; developing your 3D making skills; and using CAD/CAM to get a really professional finish.

How will my work be assessed?

Your GCSE grade will be awarded as a result of completing two units of work:

Unit 1

A written exam worth 40% of the total marks, which will require you to apply the knowledge and understanding you have acquired during the course.

Unit 2

A coursework project called Controlled Assessment, which is worth 60% of the final mark. This involves responding to a design brief set by the exam board and designing and making a graphic product alongside a twenty page portfolio. This project is started in the last term of year 10 and continues through to the spring of year 11.

Please see Mrs Meachin for further information

Why study Resistant Materials?

Resistant Materials Technology focuses on the designing and making of 'real-world' products. Using a variety of approaches, pupils are challenged to identify design needs and produce marketable solutions. This course helps students to understand and appreciate the design and manufacture process, making them more discriminating purchasers. It helps students to be creative in their approach and they use a wide variety of resources, including computers, to help with the research and design requirements of creating products.

Throughout the Key Stage, pupils learn about a range of materials and how they can be used effectively in the manufacturing of products. They also gain skills that will be useful in a wide range of future careers, in further study of Design and Technology and in other aspects of their personal life. The course is project based and requires each candidate to design and make a quality realisation to satisfy the coursework component. Students are encouraged to express their own interests in their coursework, which they will have the opportunity to realise in the full range of resistant materials.



What will I study?

- Emphasis is placed on combining skills with knowledge and understanding in order to design and manufacture quality products. Students acquire and apply knowledge, skill and understanding through:
 - Developing design, research and investigation skills
 - An understanding of a variety of materials and their properties
 - An appreciation of the manufacture of commercial products
 - An understanding of the link between the designer, the manufacturer and the user
 - Market research, costing and the evaluation of products
 - Developing practical skills
 - Recognising the moral, cultural and environmental issues inherent in design technology
 - Creativity and innovation
 - An ability to adapt to an ever changing world in which technologies continue to evolve

How will I study?

During year 10 until Easter you will make an iPad/laptop table from mild steel, experience a wide variety of practical activities by using a metal lathe, a wood lathe and use the Oxy-acetylene torches to braze mild steel. From Easter onwards you will be working on your design folder at school and at home this will be used to produce your GCSE practical project. Single lessons during Year 10 will be spent developing their background knowledge of the subject, covering areas such as; materials, design and market influences, sustainability, health and safety, tools and equipment and construction techniques.

In year 11 all lesson time is spent making the coursework project designed towards the end of Year 10, until the April of year 11. After that we prepare the students for their written examination.

How will I be assessed?

The final grade for the course is based upon:

- A written paper 40%.
This is a single level examination, covering the grade range A* - G.
- Coursework 60%.
This is a combination of a design folder and a practical outcome

Please see Mr Holden for further information

Why study Textiles?

Textiles offers you the opportunity to begin to explore in more depth the exciting world of fashion design, styling, interior design and a wide range of other Fashion and textiles careers, where creativity, imagination and a willingness to take risks will get you far.



What will I study?

The Fashion & Textiles course encompasses a lot of the subjects you already study in school, Maths, English, Science, etc. All of these are covered in our practical and theory work. As part of the course you will learn:

- To develop your own core design skills.
- About fibres, fabrics and components.
- How to be creative and how designers get inspiration for design ideas.
- Investigating methods to colour, decorate and stitch fabric.
- How designers work in industry from concept to final product including Trend Forecasting,
- Environmental and other issues that influence the industry.



How will I study?

The subject is broken down into small-scale design and make projects spread out over the course in Year 10. Alongside this, during our single lessons we study the theory that will be needed for the Year 11 exam:

Yr10

- **Pattern cutting:** Making; Developing your basic pattern cutting skills from Years 7 - 9 and adding industrial practice so that you are prepared for the course work.
- **Decorative techniques:** Looking in more depth at the different types of decoration that can be added to a garment, experimenting with techniques such as screen printing, silk painting, machine and free hand embroidery as well as tie-dye and batik.

Yr 11

Course work: During the summer term of Year 10, and the first three terms of Year 11 we work solely on the course work. You will spend this time researching, designing and developing your unique product to meet the assessment criteria.

How will my work be assessed?

Your GCSE grade will be awarded as a result of completing two units of work:

- **Unit 1:** A written examination worth 40% of the total marks, which will require you to apply what you have learned during the course in examination conditions.
- **Unit 2:** A coursework project where you will answer a brief by producing a folder and making a Fashion or Textile product. This is worth 60% of your overall mark.

Please see Miss Isaac for further information

Why study Drama?

Drama will teach you performance skills in different theatrical styles, for different audiences in a number of ways. You can choose to act, design, stage manage or create technical support for a performance in the practical aspect of the subject. Drama will help you develop your personal and social skills, in that you will become more confident in expressing yourself, communicating ideas, and in working with others.

What will I study?

Drama students will be following the Edexcel GCSE in Drama syllabus. The syllabus is made up of three sections, two of which are completed during the course (EXPLORATION OF THEME AND TEXT 60%). The third section is an end of course PERFORMANCE (40%).



The two Coursework Exploration units are as follows:

DRAMA EXPLORATION I This unit is concerned with the use of Drama to explore ideas and issues, responding to stimulus material selected from different times and cultures. [20% is Practical 10% Written Coursework Response]

DRAMA EXPLORATION II This will involve the in-depth study of a play from a performance point of view. [20% is Practical 4% Written Response] Live Theatre Performance Review of 1000 words.[6% Written]

How will I study?

Throughout the course written work will involve keeping a Drama notebook. This will be supplemented by closer focus on particular aspects such as the elements of Drama in preparation for the written portfolios. These notebooks act as a record of the student's practical work and show how they respond to and develop a variety of stimuli from different cultures and historical periods (including a well-known scripted play).

How will my work be assessed?

The final marks come from the student's Practical Performance [40%] in a presentation. This is from an established script of between 20 and 30 minutes in length. This is worth 40% of their final mark and is a group activity in which they all become essential members of a team working towards a goal. They will be expected to engage in rehearsals during break times and after school hours. This is assessed by an external examiner.

Please see Mr Palmer for further information

Why study French?

If you enjoy communicating with other people, finding out how language works and learning about different countries and cultures, studying GCSE French is an excellent choice for you! It is a real skill for life.

You will:

- be able to share your interests, ideas and opinions with other people who speak the language
- visit and learn about the country where the language is spoken
- add an international dimension to your choice of GCSE subjects, something many employers and higher education providers look for
- create greater opportunities to work abroad, or for companies in the UK with international links. Many employers look for people with language skills.



What will I study?

Having already completed three years of Language study, you're well prepared to do this GCSE course! You already know a lot of the vocabulary and grammar you'll need for GCSE. You know how to talk about yourself, your family and friends, your hobbies, where you live, school, holidays, food and drink. You'll build on this knowledge during your GCSE course, and move on to new topics such as media and new technologies.

How will I study?

In class you will study in groups, pairs and individually, practising all four skills of speaking, listening, reading & writing. There will also be an emphasis on learning grammar and a wide range of vocabulary.

How will my work be assessed?

You will be following the Edexcel specification.

Speaking 30% Assessment by teacher (2 pieces)	Writing 30% Assessed by Edexcel (2 pieces)	Reading 20% and Listening 20% Examination (2 papers)
---	--	---

Please see Ms Audemard for further details

Why study Geography?

Geography will help you understand the world around you; the landscape (physical geography), the people (human geography) and how one may affect the other, sometimes in quite spectacular ways. Employers and universities know that geography students develop a wide range of transferable skills; not just map skills but also things like fieldwork, teamwork and analytical skills.

Students wanting to directly use geography have gone on to the following areas of work: Environment Agency, Planning (private companies/local authorities), Marketing and Business Consultancy, Charities operating overseas, and of course Teaching!



What will I study?

We cover a wide range of topics to enable you to be well informed on all sorts of current issues, including: urban and rural geography, weather and climate, ecosystems, development, economic activity and the location of industry across the world, rivers and coasts (to name but a few!).

How will I study?

Geography is a subject that can use a wide range of learning styles. Visual, logical and verbal skills are used all the time. We try to fit in discussion and consider opinions, to help you develop confidence with the issues we study (intra and interpersonal skills). You will develop map skills, analyse photos and learn to interpret the world around you, using ICT and a range of fieldwork skills.

How will my work be assessed?

- Fieldwork (25%) will be written up in the form of a controlled assessment.
- 2 exams (making up 75%). One of these is a “decision-making” paper where you have to decide how an area should be managed in the future.

Please see Miss Lee for further information

Why study German?

If you enjoy communicating with other people, finding out how language works and learning about different countries and cultures, studying GCSE German is an excellent choice for you! It is a real skill for life.

You will:

- be able to share your interests, ideas and opinions with other people who speak the language
- visit and learn about the country where the language is spoken
- add an international dimension to your choice of GCSE subjects, something many employers and higher education providers look for
- create greater opportunities to work abroad, or for companies in the UK with international links. Many employers look for people with language skills.



What will I study?

Having already completed three years of Language study, you're well prepared to do this GCSE course! You already know a lot of the vocabulary and grammar you'll need for GCSE. You know how to talk about yourself, your family and friends, your hobbies, where you live, school, holidays, food and drink. You'll build on this knowledge during your GCSE course, and move on to new topics such as media and new technologies.

How will I study?

In class you will study in groups, pairs and individually, practising all four skills of speaking, listening, reading & writing. There will also be an emphasis on learning grammar and a wide range of vocabulary.

How will my work be assessed?

You will be following the Edexcel specification.

<p>Speaking 30% Assessment by teacher (2 pieces)</p>	<p>Writing 30% Assessed by Edexcel (2 pieces)</p>	<p>Reading 20% and Listening 20% Examination (2 papers)</p>
---	--	---

Please see Ms Wheeler for further details

Why Study Health and Social Care?

This BTEC award will allow students to gain a clearer understanding of the health of individuals and how society supports them. Students will also gain an understanding of the importance of communication, how to analyse an individual's needs and gain a wider knowledge of the different Health and Social Care sectors.



What will I study?

Students will study the following units, two being core units (compulsory) and the others from a choice of specialist units:



Core Units

- Healthy Living
- Effective Communication

Specialist Units

- The Impact of Nutrition on Health and Wellbeing
- Human Body Systems
- Care of Disorders'
- Individual Rights in Health and Social Care
- Promoting Health and Wellbeing
- Social Influences on Health and Wellbeing
- Equality and Diversity on Health and Social Care
- Services in Health and Social Care
- Creative and Therapeutic Activities in Health and Social Care

How will I study?

Students will study through both pupil and teacher-led activities, the use of ICT and independent learning. This course is assessed through two examined units and six assessment based units.

How will I be assessed?

The coursework will be internally assessed by teachers and the exam units will be externally assessed by examiners. Students will then receive a Pass, Merit, Distinction or Distinction* in each unit which is combined to give them their final result.

Please see Mrs Thomas for further information

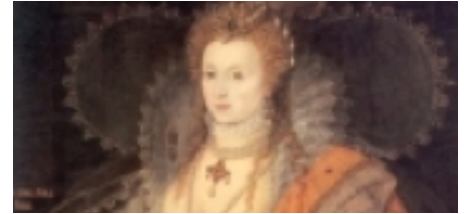
Why study History?

History teaches many valuable and transferable skills which you will be able to apply in other subjects and in your future career and studies. History helps develop your skills of understanding, analysis, summary, inference and essay writing. Studying the past will help you to develop an understanding of the world you live in today.



What will I study?

The course is Modern World History and we use the exam board Edexcel. The course covers a variety of countries and topics within the 20th century, including Weimar and Nazi Germany and International relations from 1943 up until the end of the Cold War in 1991. You will also study America between 1945 – 1970 which offers the opportunity to study events in Vietnam, the Civil Rights movement, as well as the student protest movement. Our final Unit looks at Britain from 1931 to 1951. We look at the impact of the Great Depression on Britain, investigate the events of World War Two, both at home and abroad, and explore the NHS was established.



How will I study?

History is taught through a wide range of methods, which appeal to different learning styles. Lessons feature a variety of activities, including discussion work, group and pair work, source analysis, written work, PowerPoints, group presentations and much more. Be prepared to share your ideas.

How will my work be assessed?

There are 3 examined units and 1 controlled assessment (coursework) unit. Lessons and homework will often focus on learning and practising the exam technique needed.

Unit 1	The Cold War 1943-1991
Unit 2	Weimar and Nazi Germany 1919-1939
Unit 3	Britain 1931-51 (Source Unit)
Unit 4	The USA 1945-1970 (Controlled Assessment)

Please see Miss Burgess for further information.

Why study ICT?

ICT GCSE helps prepare candidates for a world increasingly dominated by the use of ICT systems. These systems influence all aspects of everyday life. Studying for the ICT GCSE will help provide the analytical, communication and technical skills that are needed to be an active part of this fast paced world.



What will I study?

We will cover both the theory and application of the topics below

- ICT Systems
- Exchanging Information
- Presenting Information
- Manipulating Data
- Keeping Data Safe and Secure
- Legal, Social, Ethical and Environmental Issues when using ICT
- Using ICT Systems
- Monitoring, Measurement and control Technology
- ICT and Modern Living



How will I study?

The course is divided into four units. Two units are assessed through exams and the remaining two are assessed through controlled assessment. The controlled assessment will require students to be able to work independently and follow a plan that they have developed.

How will my work be assessed?

- Unit 1: ICT in Today's World - Exam 20%
- Unit 2: Practical Applications in ICT - Controlled Assessment 30%
- Unit 3: ICT in Context - Exam 20%
- Unit 4: Creative Use of ICT - Controlled Assessment 30%.

Please see Ms Cleaver for further information

Why Study Music?

- You will be able to study Music in much greater depth than you have at KS3.
- You will develop a deeper understanding of a wide range of musical styles, genres and traditions from all over the world.
- You will understand how to explain what you hear in music accurately, with reference to the subtleties in the rhythm, harmony and instrumentation.
- You will be more informed about how to perform music to bring out the full effect of a piece or song.
- You will improve your instinct for how notes can be made to fit together to create a range of musical effects; this will give you more confidence for improvising and composing your own music.



What will I study?

The AQA course is delivered using five 'Areas of Study' as a foundation:

- Rhythm and Metre
- Harmony and Tonality
- Texture and Melody
- Timbre and Dynamics
- Structure and Form

There are also three genres, or 'Strands':

- The Western Classical Tradition
- Popular Music of the 20th and 21st Centuries
- World Music

How will I study?

There are four units:

- Unit 1: Listening to and Appraising Music (20% of the marks)
- Unit 2: Composing and Appraising Music (20% of the marks)
- Unit 3: Performing Music (40% of the marks)
- Unit 4: Composing Music (20% of the marks)

All of the units will of course, be covered during lessons, but due to the nature of the performance unit, you will also be expected to take extra-curricular instrumental lessons (voice, or any other musical instrument). You should aim to be able to sing or play a piece of music to grade 3 standard at the very minimum for assessment.

How will my work be assessed?

- Unit 1 takes the form of a listening exam, where you will listen to musical extracts and answer questions based on what you hear. You will also be expected to notate a short melody or rhythm at some point during the exam. (Externally assessed)
- Unit 2 requires you to compose a piece of music stimulated by two or more of the Areas of Study. You also need to appraise it in writing. (20 hours controlled time, externally assessed)
- Unit 3 requires two performances (individual and group) on your instrument or voice
- Unit 4 is another composition, in any style you like, but it does not require an appraisal (25 hours controlled time, internally assessed).

Please see Ms Hammond for further details

Why study PE?

This GCSE builds on the knowledge, understanding and skills established by the National Curriculum. It is an excellent course for students who wish to extend their practical performance in a variety of sports as well as learn theoretical aspects of how the body works in sport.

What will I study?

Students will opt from a wide range of activities and submit four activities from two activity groups. They may also be able to be assessed in their coaching and officiating skills if they are not a strong performer. There is also a theoretical aspect to the course that will test your knowledge of the following:

- Respiratory system
- Muscular system
- Skeletal System
- Types and methods of training
- Reasons for participation in sport
- Diet and nutrition
- Drugs in sport
- First aid and injuries.

How will I study?

You will have three GCSE PE lessons a week, as well as your normal two core PE lessons. Of these three, one will be in a classroom and will work on the examination part of the course, looking at topics mentioned above. You will use a variety of learning styles and teaching methods to enable you the best opportunity to learn all the information needed for the final exam. The other two lessons will be practically based and will focus on your kinaesthetic ability in sports in a range of activities such as:

- Football, Netball, Rugby, Hockey
- Trampolining, Athletics, Fitness
- Basketball, Badminton
- Table Tennis, Tennis, Dance
- Rounders and Cricket

There is an option to submit sports done outside school and these will be assessed by a member of the PE department or in some cases video evidence. This could be Skiing, Swimming, Kayaking, Golf and Horse Riding to name a few.

How will I be assessed?

You will be assessed in a number of ways. Ultimately your course is broken down into 60% practical and 40% theory. The practical is assessed by using your four best activity scores. The theory is an exam at the end of the two years covering all the topics learnt in the classroom. There is also a 6 week Personal Exercise Programme that has to be written and carried out as part of coursework, alongside this you will have an analysis interview with a member of the PE staff, on an activity of your choice.

Please see Mr Smith for further information



Why study Religious Studies?

The GCSE Full Course in Philosophy and Applied Ethics will help you improve your understanding of people and religious influences on their lives. This course will appeal to those who are interested in exploring a variety of important issues in the world today such as the environment and medical ethics through the responses of two major world religions, Christianity and Islam.

What will I study?

We study the following topics under Philosophy of Religion:

- The nature of God
- God and revelation
- Religious and spiritual experience
- The end of life
- Religion and Science
- Good and Evil

We study these topics for Applied Ethics:

- Religion and human relationships
- Religion and medical ethics
- Religion, poverty and wealth
- Religion, peace and justice
- Religion and equality
- Religion and the media

How will I study?

You will have set textbooks that complement the OCR course with accompanying CD ROMs full of information, revision ideas and resources. There is also an interactive web site that is linked to the course to help you further your studies. We encourage group discussion and the skill of debate as this is a crucial part of our work in RS. You will be expected to have an up to date folder of your work and you will have the opportunity to complete guided practice exam questions to get you familiar with the exam requirements.

How will my work be assessed?

There is no coursework. Instead there are exams at the end of Year 11.

Please see Mrs Massie for further information.



Why Study ASDAN?

The ASDAN award scheme is a nationally recognised certificated course. The aim of the programmes is to enable young people to understand themselves and others better and to become more prepared for making the transition to adult life. The world they are entering needs adults who are not only capable of acquiring and applying the necessary academic and occupational knowledge and skills, but flexible enough to adapt to the rapid changes taking place and equipped to make active and creative contributions to local, national and international community life.



What will I study?

These awards have been designed by practitioners as a means by which Key Skills can be developed, assessed and accredited, and personal achievements formally recognised, within the framework of the Progress File. Challenges and activities will develop the following skills:

Communication

- Working with Others
- Improving own Learning and Performance
- Problem Solving

Each student is given a Progress File, which they complete in order to achieve the Bronze or Silver award. Students then have an increased sense of ownership and control of their own learning – vital in raising levels of motivation, achievement and self-esteem. Students are then able to:

- Assess their own learning
- Set clear and achievable goals
- Identify, expressing and reflect on their own view of progress and development opportunities
- Summarise achievements and compiling a portfolio of supporting evidence

How will I study?

This is a module-based course and so is assessed through 100% coursework. Students choose from twelve modules, each with sub-sections that all need to be evidenced. Students learn through a variety of tasks, for example, working in the school garden, trips into Wallingford, providing help in the local community and visits from External Agencies.

How will my work be assessed?

Students work will be assessed through the completion of their Progress File. When a student has completed a task and gathered evidence the teacher will 'sign' the section to show its completion. The aim is for students to complete up to Bronze level by the end of Year 10 and complete the Silver level in Year 11.

Please see Mrs Bowyer for further information

Why Study Sport BTEC?

The BTEC first in sport has been designed to build on learning from Key Stage 3 for students who may wish to explore a vocational route throughout Key Stage 4. It also provides a good foundation for learning at post 16 education. It is a good option over the GCSE PE option for those students who suit coursework base assessment over the traditional examination.

What will I study?

Students will study a range of topics through both theory and practical lessons. There are some compulsory units as well as optional units.

Compulsory Units:

- Fitness for sport and exercise
- Practical sports performance
- Anatomy and physiology for sports performance

Optional units:

- The mind and sports performance
- Training for personal fitness
- Leading sports activities
- Promotion and sponsorship in sport
- Running a sports event
- The sports performer in action
- Lifestyle and well being
- Injury and the sports performer
- The sport and active leisure industry
- Profiling sports performance

How will I study?

Students will study through both pupil and teacher-led activities, the use of ICT and independent learning. This course is 25% externally assessed through on line exams and 75% internally assessed through coursework assignments. The coursework component requires students to carry out both primary and secondary research.

How will I be assessed?

The coursework will be internally assessed by teachers and externally assessed through 2 online examinations. Students will then receive a Pass, Merit, Distinction or Distinction* in each unit which will all count towards their final results.

Please see Mr Smith for further details



Important Dates

Week beginning 9th February 2015

Interviews with members of Leadership Group

Wednesday 25th February 2015

Year 9 Options Evening for Parents and Students

Monday 23rd March 2015

Deadline for Options Forms to be returned to Form Tutor



Wallingford School, St George's Road, Wallingford, Oxfordshire, OX10 8HH

t: 01491 837115 e: office.4140@wallingfordschool.com

www.wallingfordschool.com